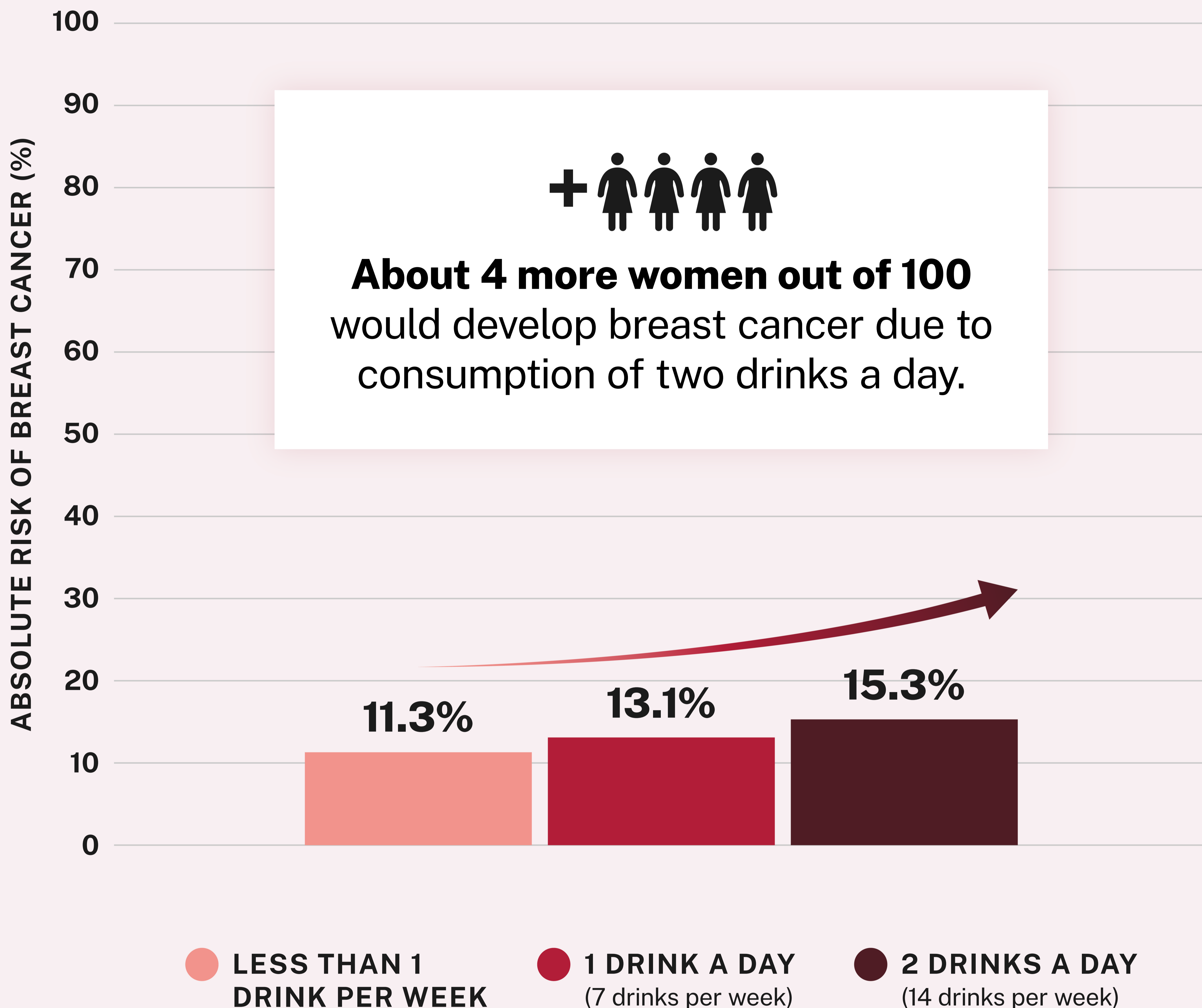


Higher alcohol consumption increases breast cancer risk in women



This graph represents the cumulative absolute risk of breast cancer in women over the lifespan by age 80.

Source: Calculated with data from Sarich, P., Canfell, K., Egger, S., Banks, E., Joshy, G., Grogan, P., & Weber, M. F. (2021). Alcohol consumption, drinking patterns and cancer incidence in an Australian cohort of 226,162 participants aged 45 years and over. *British journal of cancer*, 124(2), 513-523. <https://doi.org/10.1038/s41416-020-01101-2>



Office of the
U.S. Surgeon General